

Panel Update

At this stage the TITAN operating system has been installed but the firmware that runs on each panel must now be checked and upgraded if necessary. The USB Expert Console application allows this and the checking is automatic, you simply need to follow the instructions below.

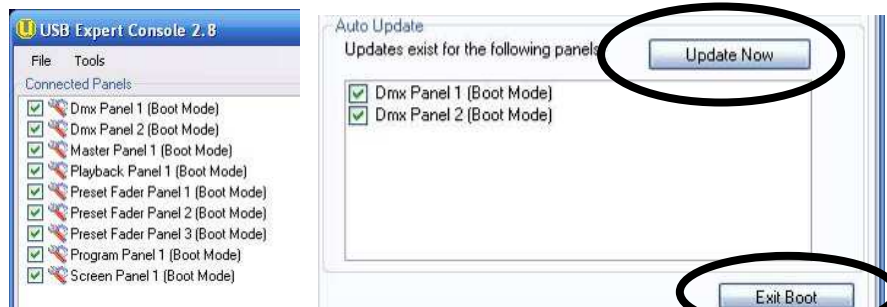
Open the USB Expert Console utility by clicking on the "U" icon which can be found on the top right of the screen, check that all the nine panels are in the "Connected Panels" list box as shown below. If panels are missing refer to Annex A.



Still in USB Expert console utility, Click on the scroll button to show the "Service" tab and then click on the "Enter Boot" button as indicated.



After about 2 minutes all panels should be in boot mode and re-appear in the "Connected Panel" list box with a red spanner icon. At the same time a list of panels that require updates should appear in the Auto Update list box as indicated below. The lists may vary from console to console. Some consoles may not need updating at all.



Click on the "Update Now" button as indicated above and wait for the system to update the panels one by one.

After the "Auto update" list box is empty click on "Exit Boot" button and observe the panels re-appearing in the "Connected Panel" list box with the green USB icon.

If the panel update is not finished after 10 minutes, press the "Exit Boot" regardless and allow the panels to re-appear in the "Connected Panels" list box, then press "Enter Boot" again and see if any panels need updating. If not simply press "exit boot" and continue. If panels require updating press

“Update Now” as previously described.

When all the panels that required an update have been updated, close the USB Expert utility and restart the console by pressing briefly the On/Off switch on the front of the console.

After this reboot close the Virtual panel (click on the minimize button top right, and then select USB Expert console for the last time

Check that all panels are present (green USB logo) and that no exceptions are shown (yellow USB logo).

Press every button and move every fader and encoder in turn on the console whilst observing the message displayed in the Event log window. This verifies everything works. If any switch, fader or button does not verify you should investigate or contact Avolites for assistance.

