



VERSION 8.0.1.XXX - DEVELOPED BY: AVOLITES MEDIA LTD. POWERED BY: SALVATION (TM)  
HARRISON DIGITAL MEDIA INC. DRIVEN BY: DAVE GREEN, TREY HARRISON, STEVE WARREN, J.B.  
CIARAN ABRAMS, SELVIN COOPER, ARRAN ROTHWELL-EYRE, SIMON GRAHAM, MARY, PRADS,  
GREG, ADAM, OLIE, ALL AT AVOLITES AND YOU. SPECIAL THANKS MARK CALVERT. LETS ROCK!

# Transitions

## VERSION 8.X

**By Arran Rothwell-Eyre December 2014**

with Additions by Dave Green & Ciaran Abrams

## **Transitions**

Ai ships with a selection of transition modes. Transition modes can be selected either by using the layer widget on the performance page or through the layer personality using channel 28.

Further transitions can be added by placing your own JPEG images into the Distrib/Transitions folder. When adding new transitions to the folder, you will need to place a 3 digit number at the start of the file name so that it can be added to the current list in a logical order and selected via ArtNet. All user added transitions will show after the blend modes at the bottom of the drop down list.

For details of how to select blend modes and transitions from Artnet please see the ArtNET / DMX channel definitions Tutorial..

### ***Descriptions & Example images***

The following pages contain an example image showing the result of each blend mode when applied as well as a brief description.

Left To Right 01



Left To Right 02



Top To Bottom 01



Top To Bottom 01





Diagonal 01



Diagonal 02



Diagonal 03



Diagonal 04



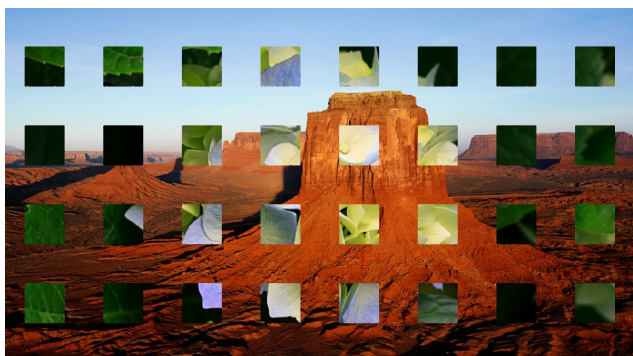
Circle 01



Circle 02



Diamond



Diamond02



Hven



Vven

