


## Avolites LTD Engineering Change Notice

ECN title	Pearl Expert SATA CD Drive Removal		
ECN Number	ECN-194		
Related Product(s)	Pearl Experts with serial number 1445-1650		
Date / Author	06/06/2012	CH	
Reasons for ECN	Optical drive SATA connector may reduce SATA reliability		
Parts required			
Tools required	Dzus tool, No2 posidrive screw driver, small side cutter		
Estimated time	15 Minutes		

### Safety Notice:

Disconnect the product from mains and any other electrical connection before opening the unit, use appropriate ESD measures when working inside the product.

### Background:

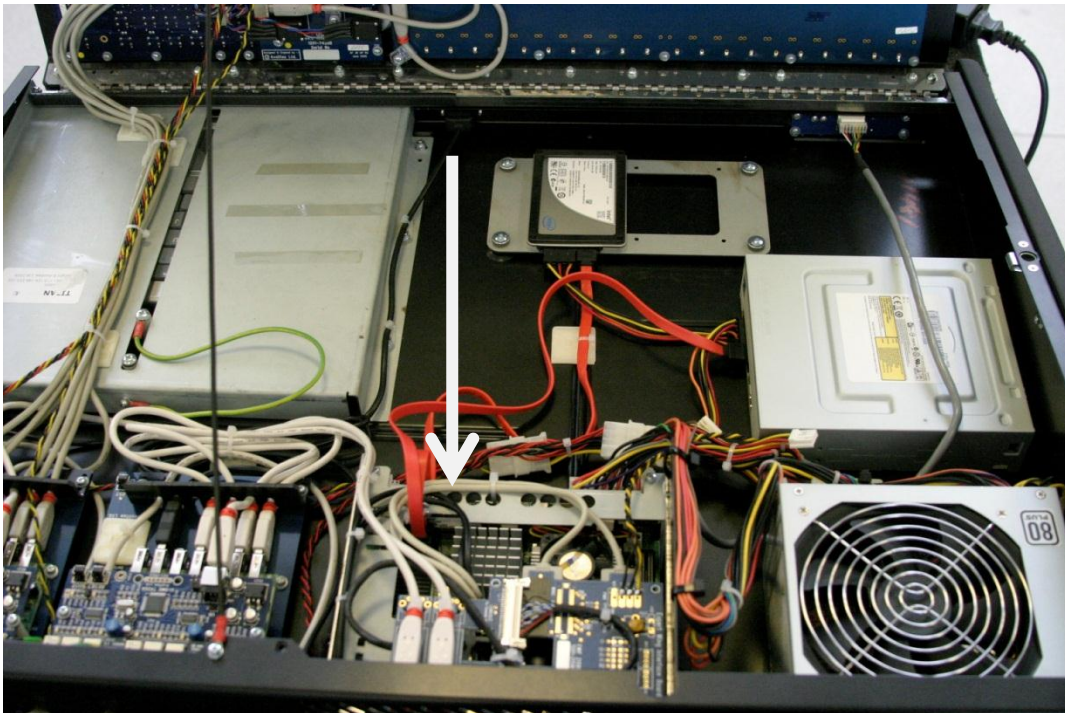
The fitting of the SATA looms in consoles with an SATA Optical drive have been identified as a risk of SATA connection failure due to the way the SATA connector was fitted. Since then Version 5 software has been distributed using USB sticks which render the Optical drive obsolete in the console. Consoles produced now do not have an Optical drive fitted.

To remove the risk of a SATA issues Avolites advises that the optical drive is removed or at least the SATA cable and the Power cable of the optical drive is removed.

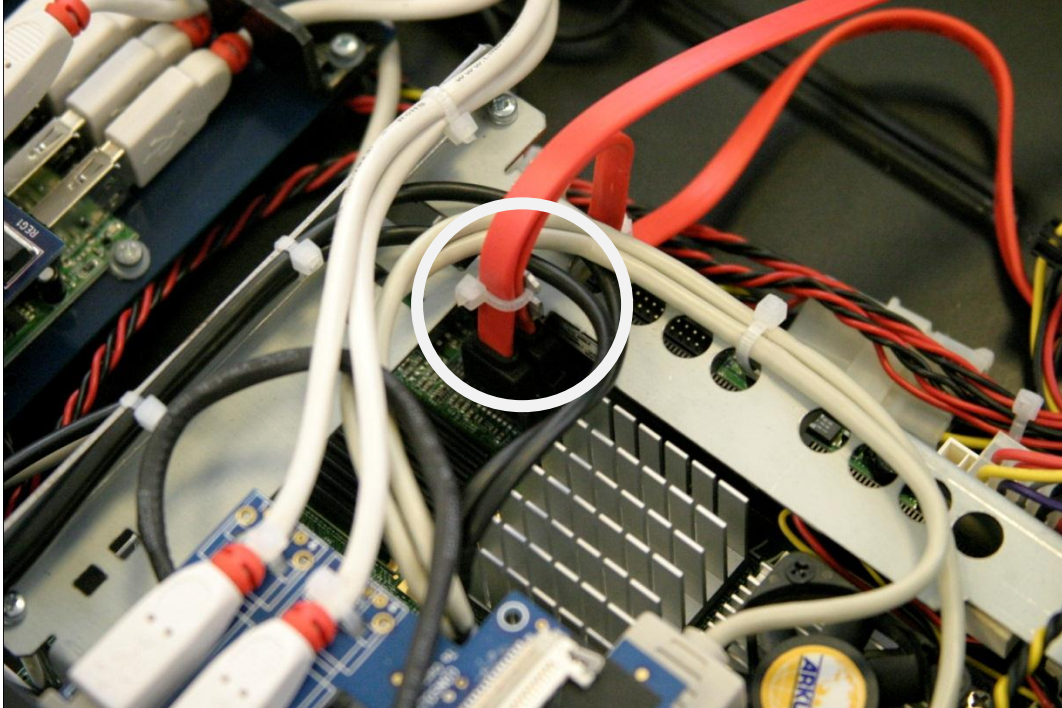
Below is a guide as to how to do this

Unlock the console by turning the Dzus screws one quarter-turn anti-clockwise.

Open the console by lifting the front panel fully from the rear of the unit.

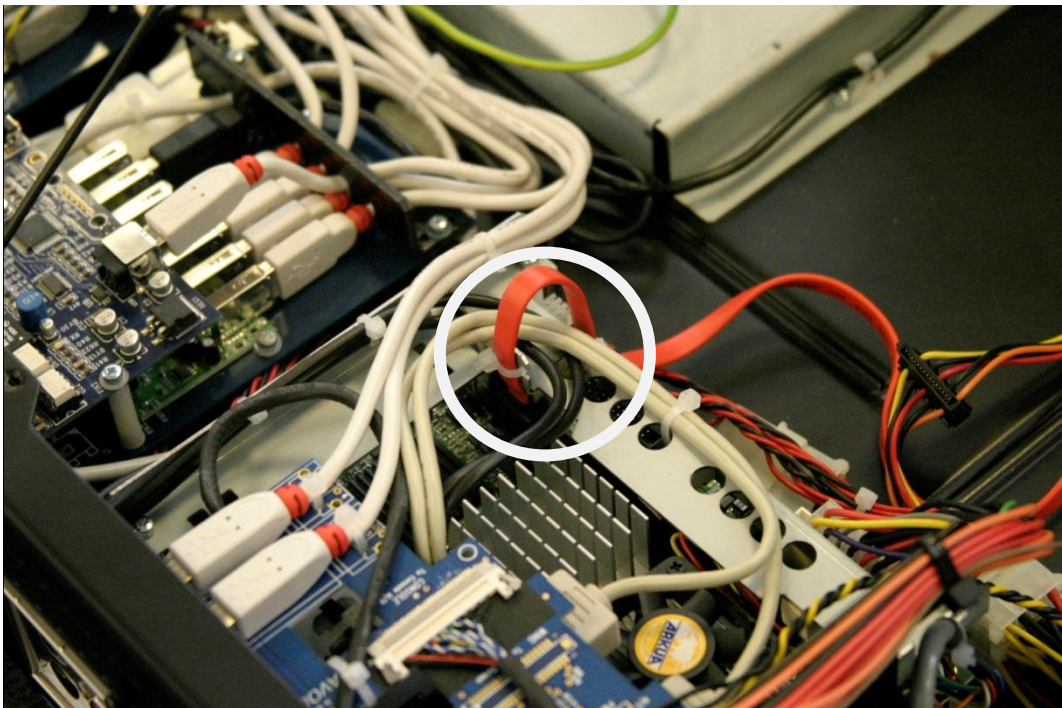


Locate the motherboard (at the rear of the console, indicated by the arrow above).



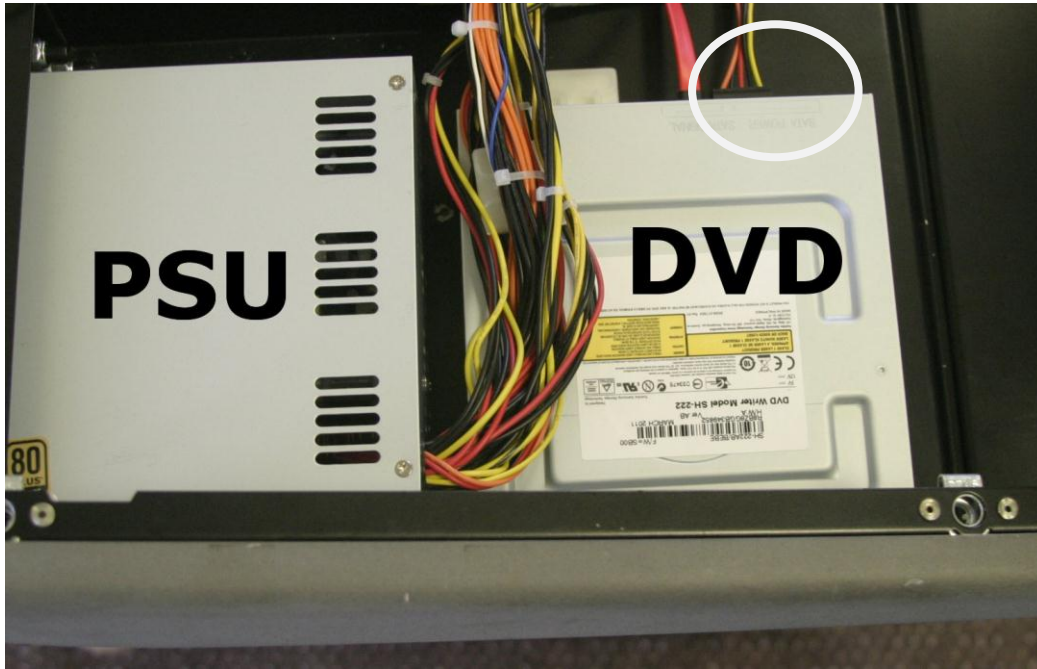
Locate the SATA cables connected to the motherboard (indicated above). Snip the cable tie connecting the two cables together.

Remove the SATA cable for the Optical Drive. Ensure that the SATA cable for the Hard Drive is inserted into the SATA socket furthest from the rear of the console, as shown below. Re-secure the cable to the motherboard frame using a small cable-tie.





Disconnect the power and SATA cables from the rear of the optical drive. Remove the SATA cable from the console.



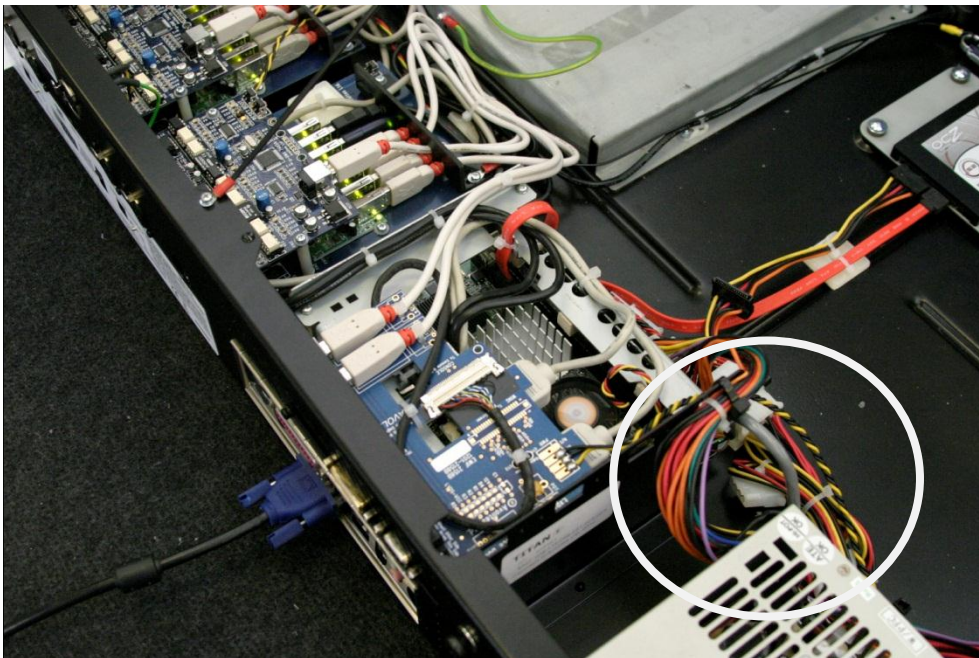
Remove the optical drive screws from the underside of the unit, and retain them for later. Remove the drive from the console.



Install the optical drive blanking plate (1374-0090AB) from the inside. Fix it to the base of the chassis using the two optical drive screws.



Use a cable-tie to secure the unused optical drive power connector to the rest of the loom as shown below.



Close the console and secure the dzus screws.

This concludes the ECN.